

MRac BIPV Solar Carport System



Features

High Waterproof

The new structure is equipped with water channel to achieve waterproof purpose, which is conducive to lower maintenance cost and longer service life.

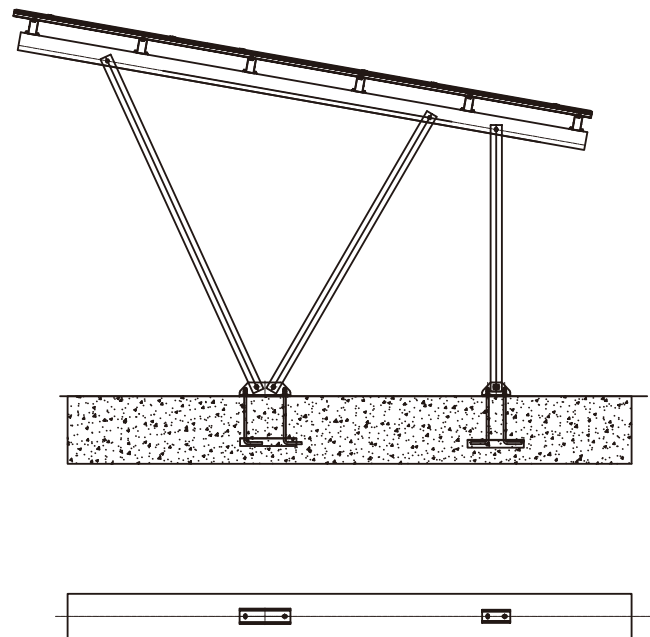
Save Installation Time and Labor Cost

With installation manuals and system solution, most components are pre-assembled in factory without the need of on-site cut and welding and the installation is done by simply tightening the bolts. Less construction time directly reduces project costs and convenient subsequent maintenance.

Stable construction

The high-quality aluminum solar carport frame has a protective powder coating.

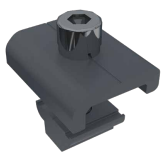
The structure is stable und long last.



Technical Parameter

Installation Site	Open Area
Foundation	Concrete foundation
Tilt Angle	10°
Wind Load	40m/s
Snow Load	0.85KN/m ²
Panel Layout	Portrait 3x6 Module
Design Standard	EN1991 , AS NZS1170.2-2011 , JISC8955-2017 , ASCE 7-10 , DIN 1055 , JIS C 8955: 2017, International Building Code IBC 2009 , California Building Code CBC 2010
Main Material	AL6005-T5(Anodized) & SUS304
Color	Anthracite grey
Warranty	10-Year Warranty
Total carport dimensions	7250 x 5200 x 3428 mm
Rear entrance height	2182 mm
Main material thickness	3 mm
Panel size	1722 x 1134 x 30 mm

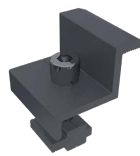
Component List



C Clamp Kit



Inter Clamp Kit



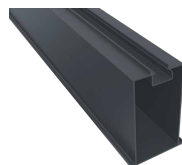
End Clamp Kit



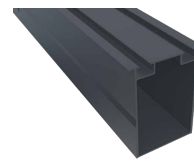
Anchor Plate for Carport



Square Tube



Cross Beam



Beam



Splice for Beam